



ALPHONSE
FISHING COMPANY
SEYCHELLES



Alphonse Island

FACT SHEET

THE ULTIMATE FISHING EXPERIENCE...

www.alphonsefishingco.com

24 AUGUST 2017



Alphonse Atolls

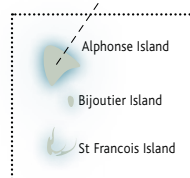
The Alphonse group is considered one of the most pristine, untouched Edens of the world, making it a nature lover's paradise. The magnificent island threesome comprising of Alphonse, St Francois and Bijoutier lies in the very heart of the Indian Ocean as part of the Seychelles outer islands.

AT A GLANCE

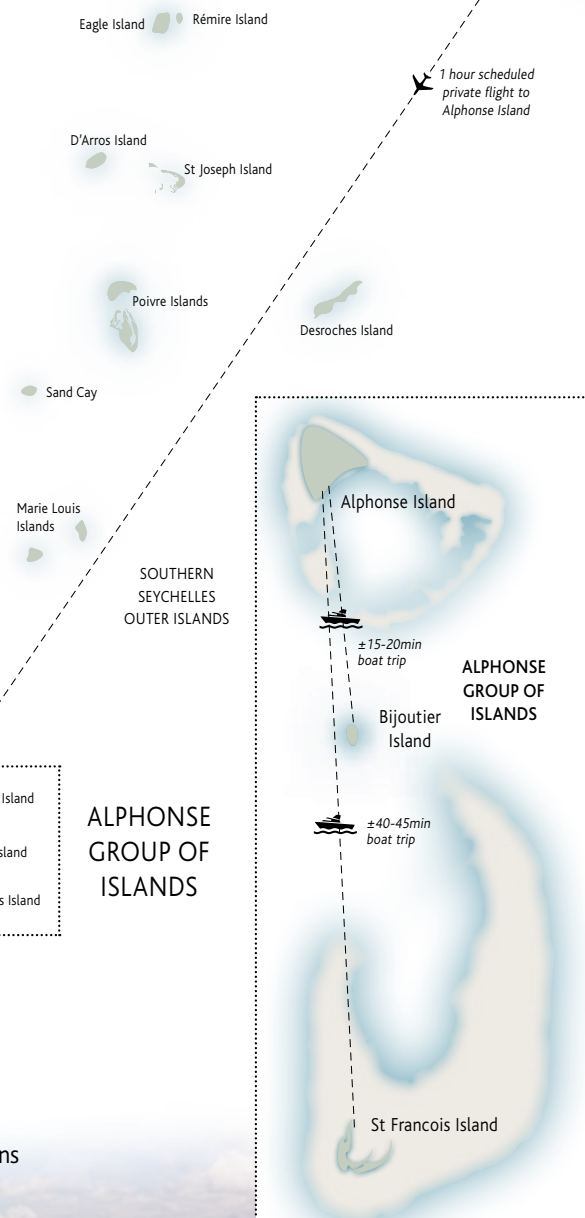
- Located 400km [250 miles] south-west of Mahé in the Seychelles.
- Situated only 7° south of the equator.
- Miles of unblemished shorelines, lagoons and sea flats.
- Pristine & Private – only 22 Beach Bungalows and five Beach Suites.
- One of the most remote inhabited islands in the Seychelles.
- Similar time zone to Europe, African and Middle East.

GETTING THERE

- Four and a half hour flight from Dubai, Abu Dhabi, and Doha which all serve as a connecting hub for regular international flights from Europe, the United States, Africa and Asia.
- Direct flights to the Seychelles from Paris, Bombay, Nairobi, Mauritius, Antananarivo, Johannesburg, Addis Ababa, Reunion, Colombo, Dar-Es-Salaam and Frankfurt.
- Alphonse Island is an hour flight from Mahé, the main island of the Seychelles.
- Scheduled flights depart and return to Mahé each Saturday and selected Wednesdays.
- Scheduled Flights depart from the IDC Hangar, Pointe Larue, Mahé.
- Flight times are subject to change. Please make sure you confirm your correct flight times with our reservations team.
- Alphonse Island is also accessible through private charter flights.
- Guests are required to fly into Mahé at least 4 hours prior to departure.
- The Alphonse Island reservations team will assist with all return flight reservations between Mahé and Alphonse at the time of booking.



ALPHONSE GROUP OF ISLANDS



LUGGAGE RESTRICTIONS

Check-in luggage restricted to 15kg [33 pounds].

Carry-on luggage restricted to 5kg [12 pounds].

Lighter soft shell luggage.

Excess luggage can be left at the hangar in Mahé.

LIMITS TO BE ADHERED TO



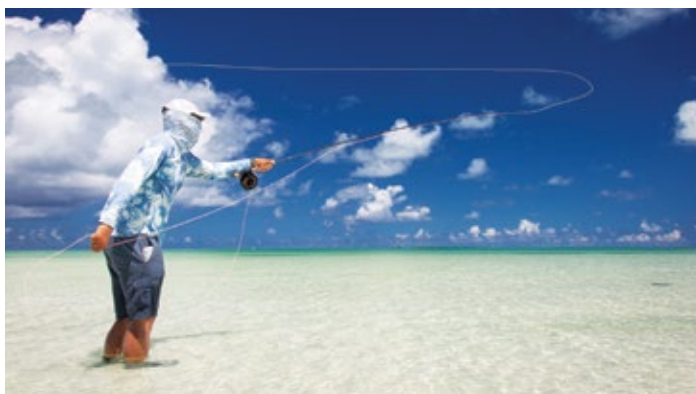
ALPHONSE ISLAND

For a Fishing Trip of a Lifetime...

The Alphonse Group is one of the most famed saltwater fly fishing destinations in the Indian Ocean and one of the most prolific bonefish fisheries in the world. St Francois is approximately seven miles long and four miles wide, consisting of firm white sand bottoms interlaced with channels and cuts. **The maximum number of anglers allowed to fish on St Francois is limited to 12 per day.**

TIDES

Fishing is very much tide dependent, so the prevailing conditions will dictate which species you will focus on. The factors controlling numbers of fish caught are weather, timing of the tides and, perhaps most importantly, skill and the decision to go for size or quantity.



FLATS FLY FISHING

The uniqueness that sets St Francois apart from many other saltwater destinations is the ability to wade over 10 000 acres of hard white sand flats in search of the various species on offer.

A typical fishing session will involve wading away from the skiff for a few hours. Bonefish wades will involve either fishing to cruising or tailing fish as they forage for crustaceans. On falling tides it is often the case that huge shoals of bonefish can be targeted when leaving the flats in what has been described as a continuous river of bonefish.

Whether you're after tailing singles and doubles or shoals, our guides have the ability to make it happen. St Francois is rumoured to have the densest population of bonefish recorded worldwide.

Some flats support larger bonefish specimens than others and a fair lagoon average would be about four pounds. The largest bonefish caught to date was a whopping nine and a half pounds! The average catch returns over the last three years are 12 to 15 bonefish per person

per day and depending on the angler's skill, often many, many more! It is not uncommon for good fly anglers to land 20 to 40 fish in a day's succession.

In addition to the abundant bonefish flats, the lagoon envelopes coral finger flats and coral heads allowing anglers to catch several of the now 60 species targeted on fly, including three species of triggerfish, seven species of trevally, milkfish, barracuda, sailfish, dogtooth tuna, yellowfin tuna and a plethora of other flats and offshore species. Sight fishing for giant trevally is one of the most exhilarating forms of fly fishing one will ever experience, especially when they grow in excess of 150lbs!

At certain times of the year, milkfish feed on plankton near the surface and are then enticed to eat flies. Alphonse is where the "milkfish on fly" dream began and these speedy, high flying fish, which have been caught up to 40 pounds, entertain our guests every season.

ALPHONSE ACCOUNTS FOR MORE THAN 90% OF THE WORLDS MILKFISH CAUGHT AND RELEASED ON AN ANNUAL BASIS.

REGULAR CATCHES : bonefish | moustache triggerfish | milkfish | giant trevally | barracuda | bluefin trevally | permit | jobfish
bohar snapper | yellowlipped emperor | sailfish | yellowfin tuna | dogtooth tuna | wahoo | yellowmargin triggerfish





BIG GAME FISHING

Fly & Conventional Trawling – Take Your Pick



The unspoiled waters of Alphonse and St Francois atoll are home to the most incredible variety of blue water fish species, making it a great destination for offshore fishing. The structure and sheer drop-offs are ideal for attracting a variety of pelagic species that can be caught on fly as well as conventional trawling methods. Fish such as sailfish, wahoo, dogtooth tuna, yellowfin tuna and dorado can be challenged on any given day. Anglers can choose to either spend a half or full day targeting some of the hard fighting fish on offer.

We have four offshore vessels [Y-Knot, A'mani, Predator and Flyer] which can be chartered for either a half or full day excursion.

Our skippers and deck hands are experienced at rigging, teasing and switching to the various bluewater pelagic species, such as sailfish, wahoo, dogtooth and yellowfin tuna.

We practice a strict "no conventional/spin fishing" on or close to the islands, flats and reef to preserve the resident species that use the shallow reef as an access point onto the flats and surrounding areas. Pelagic fish are caught for consumption and guests are invited to bring their catch back to shore and liaise with our chefs to prepare it fresh for dinner.



REGULAR CATCHES :

sailfish | wahoo | yellowfin tuna | dogtooth tuna | barracuda | jobfish | dorad | black jack trevally | blue marlin |





SEYCHELLES SPECIES

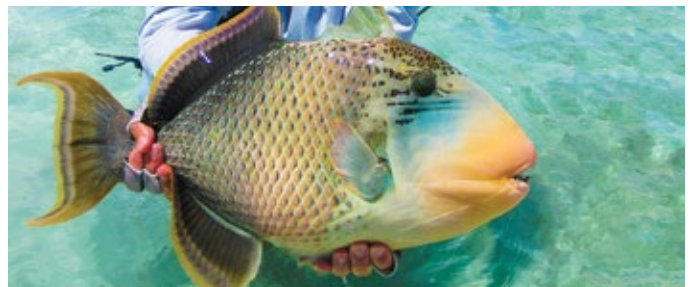
The Finest Saltwater Fly Fishing on the Planet

FLATS FLY FISHING



BONEFISH *Albula vulpes*

Alphonse has an extremely healthy population of bonefish that frequent the flats and has, without a doubt, the largest bonefish population in the Seychelles with huge numbers between 4- to 6lbs with the odd fish reaching 8lbs. On falling tides it is often the case that huge shoals of bonefish can be targeted when leaving the flats in what has been described as a continuous river of bonefish.



YELLOWMARGIN TRIGGERFISH

Pseudobalistes flavimarginatus

Triggerfish are opportunists, feeding mainly on small crustaceans, which makes them perfect targets on a fly. Alphonse offers great opportunities when it comes to targeting yellowmargin triggerfish. These colourful characters, that grow in excess of 15lbs, have extended anal and dorsal fins that work in conjunction with each other but in different directions, giving them incredible acceleration.



MOUSTACHE TRIGGERFISH *Balistoides viridescens*

A colourful and energetic feeder that tails when feeding in the shallows, both up on the flats and on the reef edges. Known as a giant, titan or moustache triggerfish, it is the largest of the three species that can be caught at Alphonse. The Alphonse guides were the first to develop the flies and techniques to deceive these fish, as well as to introduce triggerfish as a much sought-after trophy for flats fisherman.



MILKFISH *Chanos chanos*

A finicky algae feeder and a ferocious aerobic fighter reaching lengths in excess of 180cm and weights over 50lbs. The Alphonse guides were the first to develop the flies and techniques to catch this sought-after trophy. The first milkfish ever caught on fly was at Alphonse and it is still the best destination in the world for this species, with more caught on these atolls than all the world's destinations put together. The milkfish at Alphonse are somewhat bigger than those at our other destinations.



INDO-PACIFIC PERMIT *Trachinotus blochii*

Also known as pompano, it is a member of the Carangid family and a relative of the Atlantic permit. Alphonse has good populations of permit and tends to have these fish spread out over the entire fishery. The Alphonse Guides have near-perfected the art of catching these fish, considered the Holy Grail of saltwater flyfishing!



GIANT TREVALLY *Caranx ignobilis*

A super predator that is found at all our destinations in good numbers with specimens as large as 120lbs. Alphonse has less GT's than that of Astove and Cosmoledo, yet Alphonse GT numbers are consistent and average catch stats of approximately 250 per season, or 8 per week.



SEYCHELLES SPECIES

BLUE WATER FLY FISHING & GAME FISHING



BLUEFIN TREVALLY *Caranx melampygus*

Bluefin trevally are distributed throughout the tropical waters of the world with populations varying according to fishing pressure. Areas like Alphonse, that have shallow lagoons, support healthy populations of juveniles, which contribute immensely to the overall population. The typical size of fish would be from 18cm to 80cm, with an 80cm specimen being a trophy.



BARRACUDA *Sphyraena barracuda*

These fearsome looking creatures are extremely fast and jump when hooked. Larger barracuda, which grow to over 240cm, are more or less solitary in their habits and hunt alone when on the flats. Although all of our destinations have great numbers of barracuda, the largest specimens are caught at Alphonse due to the incredible population of bonefish that they feed on.



INDO-PACIFIC SAILFISH *Istiophorus platypterus*

The sailfish is the fastest fish in the sea and named after its large dorsal fin, which extends most of the length of its body. These acrobatic fighters are found a mere two nautical miles, or 10 minutes from Alphonse's mooring. Alphonse has a large population of sailfish and is very well equipped with the correct game boats and bluewater teams to tease and target these fish.



WAHOO *Acanthocybium solandri*

The Seychelles waters are known for their incredible numbers of wahoo due to the rich currents that flow close to the atolls. Reaching speeds of up to 80 kilometres per hour, the wahoo is the third fastest fish in the sea. The wahoo that frequent the Alphonse waters range between 10- to 50lbs. At certain times of the year they migrate to follow shoals of baitfish, so some times of the year can be better than others.



DOGTTOOTH TUNA *Gymnosarda unicolor*

Dogtooth tuna are a resident-pelagic fish that are found along the drop-offs in good numbers at Alphonse. They patrol continental shelf drop-offs and frequent depths between 50- and 150ft, which are found relatively close to shore around the atoll. These fish can be targeted by dredging with a heavy sink tip fly line and a Mega Clouser.



YELLOWFIN TUNA *Thunnus albacares*

Alphonse is surrounded, at close proximity, by sheer drop-offs and ledges. Yellowfin tuna tend to follow the bait as they migrate through the Seychelles waters therefore Alphonse usually has good numbers of yellowfin tuna year round. Alphonse is best set up with the correct game boats and bluewater teams to target these hard fighters.



ALPHONSE ISLAND

Equipped for the Ultimate Fishing Experiences



FLEET

SKIFFS

Skiffs range between 16 to 18ft in length and have single tiller arm engines. Guests require a level of fitness that will enable them to board the skiffs. Skiffs are equipped with flares, flotation devices, first aid kits, rod holders, storage compartments, anchors and Yeti coolers.

BLUE WATER VESSELS

A'MANI A newly refitted 54ft motor catamaran that caters to fishing trips as well as liveaboard trips to the various islands in the Amirante chain of islands. She is extremely comfortable, stable and has spacious aft game deck rigged with outriggers. A'mani offers four cabins with two communal showers and toilets as well as an additional on-deck shower. All cabins and indoor areas are fully air conditioned, allowing guests a chance to relax after a long days fishing.

FLYER is a 30ft walk around mono-hull, powered by twin 300hp Suzuki four stroke outboard engines. She is rigged with the latest Furuno technology for sounding and navigation, coupled to radar and VHF radio type communications. The layout of this boat makes her extremely versatile for all kinds of fishing. She is fitted with outriggers and has a cabin, which shelters guests from the elements.

PREDATOR A 35ft sportfisher fully kitted out for game fishing. Powered by two 440hp Cat engines, Predator handles the sea extremely well while giving a very smooth, comfortable ride. Fitted with the best in Furuno sounding GPS and radar systems, a toilet, air-conditioner, fridge, fighting chair and comfortable bench seating, Predator is the ideal game fishing boat.

Y-KNOT A 30 ft centre console walk around sportfisher, powered by twin 250 hp Yamaha four stroke outboard engines. She is rigged with touch screen Raymarine navigation, communications and radar electronics. Her bow seating and removable table is perfect for serving lunch. The layout of this vessel makes her extremely versatile and perfectly suited for popping, trolling and fly fishing.

ALL BOATS ARE SUBJECT TO AVAILABILITY



TACKLE & GEAR

Alphonse has a fully stocked tackle and gear shop with an extensive collection of flies, flylines and accessories for sale, should you need extra, run out, our would like to take something home with you. We also stock Yeti coolers and flasks, Columbia clothing and caps, and Thomas & Thomas fly rods for purchase.



ROD & REEL LOAN

Fly fishing outfits consisting of Thomas and Thomas fly rods and Shilton reels, loaded with 300 yards of Cortland braided backing. Fly lines will need to be purchased from the shop and it is recommended that you pre-order a fly pack for your expedition, which would include all the flies you would need for the various different species on offer. There is a full range of flies that are custom tied for Alphonse on the right hooks and with the correct material. It's important that angler's pre-book the rod loan. All rod breakages will be for your account and will be billed at US\$150 per section of rod.

YETI

EST. 1969

THOMAS & THOMAS
THE ROD YOU WILL EVENTUALLY OWN

CORTLAND
LINE COMPANY | SINCE 1915

**SHILTON
REELS**

FLYZ INC.
Testing the Water through Innovation



A TYPICAL DAY

On a Fishing Expedition to Alphonse



OUR GUIDES

The Alphonse Island guide team along with the Island Conservation Society have worked tirelessly to ensure that the fishery at Alphonse, St Francois and Bijoutier and is protected from over fishing. The Guides are conservationists at heart and some of them also hold qualifications in the field of ecology.

ALL ALPHONSE GUIDES:

- Are professional, passionate and well trained with a comprehensive knowledge of the areas in which they operate.
- Are fluent in English [some speak French and Creole].
- Carry waterproof VHF radios and are in constant communication with each other as well as the base on Alphonse.
- Are qualified skippers, with STCW qualifications and have impeccable boat handling skills.
- Have first aid experience.
- Have pioneered many of the techniques in catching the various species that call Seychelles home eg: milkfish & triggerfish.

Guiding takes place on a rotational basis allowing anglers to experience the different characters within the guide team.



FISHING ITINERARY

ARRIVAL DAY

- Check-in, orientation and briefing.
- Once settled, guests venture down to the fishing centre for tackle set up and briefing.
- The guide team will assess guests tackle and flies as well as give advice and answer any questions.
- Guests will have the opportunity to purchase flies, leader, clothing, sunglasses and accessories from the fishing shop.

NOTE: Alphonse Island offers a complimentary rod and reel loan service. **Pre-booking essential.**

- Once everything is rigged and ready for the week, guests have the option to either fish unguided on the Alphonse flats, relax around the pool or at the "Le Lys" bar, or enjoy the myriad of activities on offer until dinner is served at 19h30.

FISHING DAYS

Anglers will fish in pairs sharing a skiff and guide each day.

- 06h00 - 06h45 : Breakfast - Bijoutier Restaurant
- 07h00 SHARP : St Francois departure
- 07h45 : St Francois arrival and transfer to skiff
- 08h00 : Start Fishing
- Lunch on skiff or mothership in form of a lunch pack
- 16h00 : Lines up and transfer back to mothership
- 17h00 : Transfer back to Alphonse Island
- 17h45 : Arrive at Alphonse Island
- 19h00 : Pre-dinner drinks in Le Lys Bar
- 19h30 : Dinner - Bijoutier Restaurant





THE RESORT

Exotic Simplicity

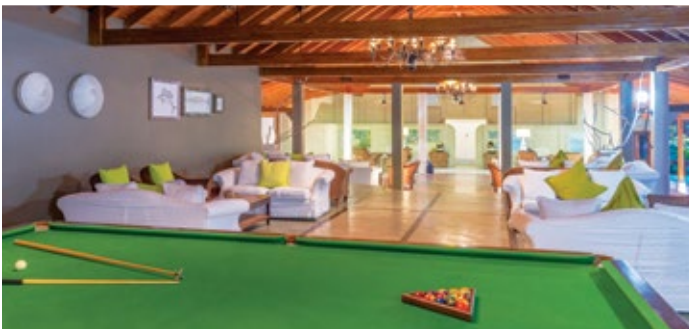
Alphonse Island features a single resort comprising of Beach Bungalows and Beach Suites built alongside the water's edge, each with scenic ocean views. Freedom of movement around the island on foot or bicycle permits self-discovery of the wonders of this special place.

The main hotel complex consists of a reception area, beach bar, dining area, swimming pool, tennis court and main office. Guests stay in one of 22 privately spaced air conditioned Beach Bungalows or five one-bedroom Beach Suites, offering every kind of comfort. The bar area, pool and lounge area provides the ideal venue to relax in the evening breeze, after a day out in the sun and houses the restaurant which serves freshly caught fish of the highest quality.



AT A GLANCE

- Beach Bar & Dining Area
- Restaurant Dining Area
- Smoothie Café in the Veggie Garden
- Entertainment area with Snooker Table & Table Tennis
- Lounge Area / Beach Bar with Wi-Fi
- Swimming Pool
- Sunset Bar
- Azure Spa offering calming, tranquil treatments such as pedicures, manicures and massages
- Tennis Court
- Giant Chess Board
- Boutique
- Extensive Watersports Centre
- Scuba Diving Centre with PADI bubble maker, discover scuba, open water, advanced and specialty scuba courses
- Tackle & Gear Shop
- Island Conservation Society Research Centre
- Tortoise Sanctuary





ACCOMMODATION



Beach Bungalows

The 22 Beach Bungalows are set amongst lush tropical plantations just metres from the beach. Located on the eastern shoreline of the island the Beach Bungalows are decorated in a unique style that emphasises the raw and natural beauty of the island. With a layout that keeps guests' relaxation foremost in mind, the Beach Bungalows are ideally situated to make the most of the beautiful surroundings.

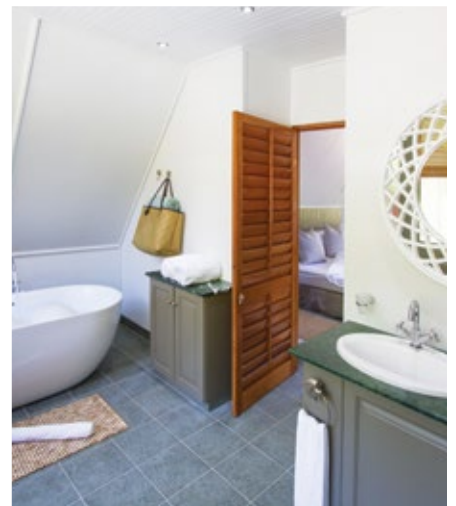
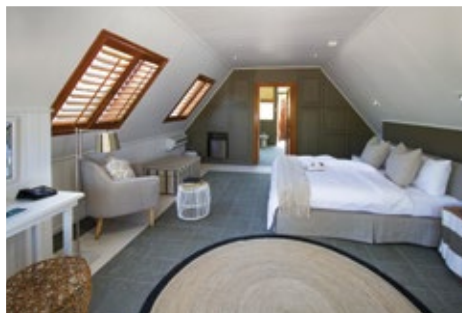
Each Beach Bungalow has its own veranda, overlooking the turquoise waters of the Indian Ocean. Perfect for watching the sunrise with a cup of coffee or watching the sunset with a cocktail in hand.

ROOM HIGHLIGHTS

- Just steps from the ocean.
- Own garden, ensuring optimal privacy.
- Outdoor shower and indoor bath.
- Veranda, perfect for watching the sunrise or sunset.

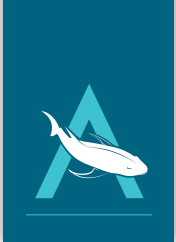
AT A GLANCE

- Size 54m²
- Max Occupancy ... 2 + 2
- Beds 1 King
- Extra Beds 2 extra beds or cot
- Outdoor Shower & Indoor Bath
- View Garden & Ocean Views



ESSENTIALS & AMENITIES

Air-conditioned | Safe with Keys | Mini-bar | Landline Telephone | Beach Towels | Ceiling Fan
Laundry Service | Beverage Station with Nespresso Machine | Shaver outlet | Hair Dryer
Outdoor Shower | Bath Tub | Mosquito Net (on request) | Private Bicycles | Sun Loungers



ACCOMMODATION



Beach Suites

The five Beach Suites are nestled amongst tropical plants, mere steps away from the white sandy beach. The one-bedroomed Beach Suites are spaced for optimum privacy. Complete with a sun deck, open plan living and bedroom, the Beach Suites are ideal for families, honeymooners and couples alike.

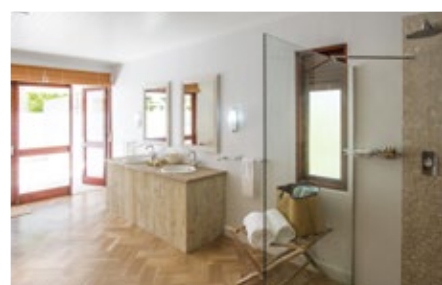
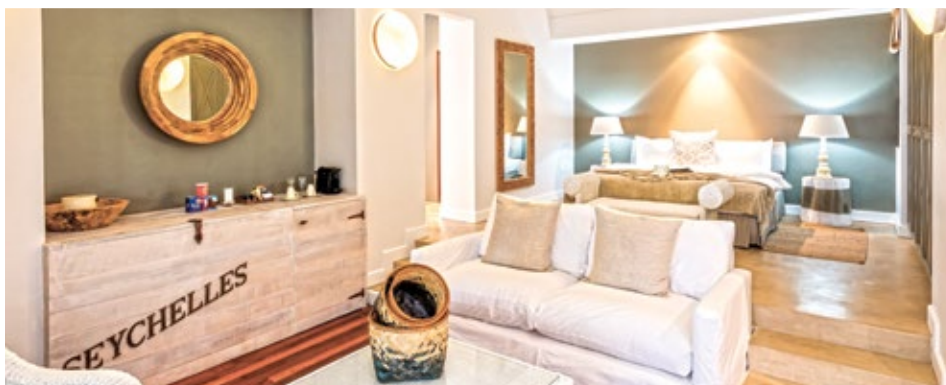
The Beach Suites are decorated in a tranquil natural style. A large patio, overlooking the ocean, provides the ideal spot to chill between island adventures.

ROOM HIGHLIGHTS

- Extremely spacious.
- Easy beach access, with the ocean only meters away.
- Large lounge area.
- Indoor & outdoor shower.
- Additional guest WC.
- Private deck with sun loungers and relaxation area.

AT A GLANCE

- Size..... 126m²
- Max Occupancy 2 Adults, 2 Children
- Beds 1 King / 2 Twin
- Extra Bed 2 extra beds or cot
- Bath/Shower Indoor & Outdoor shower
- View Garden & Ocean Views



ESSENTIALS & AMENITIES

Air-conditioned | Safe with Keys | Mini-bar | Landline Telephone | Beach Towels | Ceiling Fan
Laundry Service | Beverage Station with Nespresso Machine | Shaver outlet | Hair Dryer
Outdoor Shower | Bath Tub | Mosquito Net (on request) | Private Bicycles | Sun Loungers



ALPHONSE EXPERIENCES

Over and Above our World Class Fishing...



Alphonse Island needs to be experienced to be believed... quiet picnics on secluded beaches, sunset cruises with loved ones, mesmerising encounters with captivating marine life and blissful pampering treatments; all in picture-perfect surroundings that enhance every sensation.

The geographical isolation of Alphonse Island creates an atmosphere of undisturbed solitude where guests forget about the outside world and immerse themselves in all the natural wonders and unique experiences that the island has to offer. An action-packed holiday, romantic sojourn, or an idyllic beach break, Alphonse Island offers both exhilarating and relaxing experiences.

**** COMPLIMENTARY ACTIVITIES ON ALPHONSE ISLAND. ALL ACTIVITIES ARE WEATHER AND TIDE PERMITTING.**

ALPHONSE CYCLE TOUR**

A guided tour across Alphonse stopping at major landscapes and seascapes. During the tour guests will be informed about the early settlers of Alphonse and the changes from indigenous forest to coconut plantation. Learn about birdlife, fish and plants as every corner of the island is explored with our knowledgeable guides.

BIJOUTIER ISLAND VISIT

Stroll the deserted beaches and swim in crystal clear calm water on Bijoutier Island. A hotspot for turtle nesting. Guides explain the life cycle of the turtles – from hatching to laying their own eggs. Guests may get lucky and peer into the depths of the forest to see the nests of the Wedge-tailed Shearwater, perhaps a mother or chick too!

DOLPHIN VIEWING

Alphonse Island is a year-round home to a few pods of spinner dolphins. Share the thrill of meeting one of these dolphins or spot manta rays, tuna and many other marine species.

ICS WALK**

The ICS team offer activities upon the island such as Turtle Patrol, Beach Clean ups, Giant Tortoise viewing and feeding and bird-watching. This is something everyone on Alphonse holds very close to their hearts. Without their sound knowledge, the ecosystem on the atoll would not be how it is today.

INDEPENDENT ACTIVITIES**

The cycling and running paths around the island pass through coconut groves and lead to the various private and secluded beaches on Alphonse. Guests are provided with a map for the directions and distances of these routes. The entertainment area situated near reception has a snooker table and there is table tennis, a giant chess set and a tennis court available near the swimming pool.

Paddle boards and stand-up paddle boards are available for guests wanting to explore the island independently. Snorkelling is a great way to see what marine life resides beneath!





ISLAND SPECIALITIES

Each week guests are offered a few luxuries Alphonse Island is renowned for:

SUNDOWNERS ON THE BEACH**

A cocktail or a ice cold beer can be enjoyed while watching the picturesque sun set above the waters.

FLATS LUNCH**

A special treat offered by Alphonse Island is the amazing Flats Lunch. A dining atmosphere like no other. Guests get to revel in the sheer beauty of the flats whilst feasting on a delicious buffet accompanied by an ice cold beverage.

DE-TACKLING DRINKS AND SNACKS**

Every Friday guests join the Alphonse guides and team at the Dive Bar for a social de-tackling gathering. While the guides de-tackle, guests enjoy drinks with fellow fishing / diver partners celebrating the week's achievements. Remember, every fish counts.

KAYAK**

Kayaks are a perfect and non-intrusive way to get up close to turtles and rays around the flats and allow guests to enjoy Alphonse from a new perspective. A guided tour by nature experts who will point out seabirds and spot fishermen's delights such as bonefish, permit and triggerfish.

Kayaks are readily available and offer Guests the opportunity to appreciate the untouched exquisiteness of Alphonse Island solely at their own pace. A picnic basket can be organised for guests to carry along, enabling them to choose a spot for a secluded meal.

REEF FLATS EXPEDITION**

Travel the inside reef flats of Alphonse with a knowledgeable and insightful marine biologist. On this expedition guests get to appreciate the untouched view of the white sand and crystal clear waters whilst spotting juvenile turtles, eagle rays, eels and see all types of nature come together. Partake in an optional volunteer biodiversity survey and gather baseline data about all the species found deep in the sea grass meadows, under rocks and squeezed into crevices in the reef platform.

SCUBA DIVING

Come face to face with daily encounters of stingrays, turtles, moray eels, barracuda, sharks, tuna, grouper, snapper, trevally and many more on the 30 dive sites suitable for any class of diver, from beginner to advanced.

- Registered PADI Dive Centre offering a variety of courses, including Specialty Scuba Courses.
- Obtain or upgrade your diving tickets, a full PADI [Open Water & Advanced] & Rescue Diver.
- PADI Discover Scuba Diving [DSD] [one-hour theory, a pool session and a shallow dive to 12m].
- PADI Bubble Maker [suitable for children as young as eight years].
- PADI Divemaster.

SNORKELLING**

Non-divers may also experience the beautiful, enchanting marine life by partaking in Guided Alphonse and St Francois or Bijoutier snorkelling trips. Snorkelling equipment is complimentary and is available for all guests use. The abundant and colourful sea life sights are not to be missed.

SPA THERAPIES

Relax in the quiet comfort of Azure Spa after a days fishing, diving or beside the pool. Our qualified masseuses work magic on tired bodies in need of special attention or simply those just wanting to indulge. From head and shoulders to full body massages we are able to tailor treatments to the individual. Special packages such as the fishermen's massage concentrate on key sensitive points to ensure you leave feeling rejuvenated.

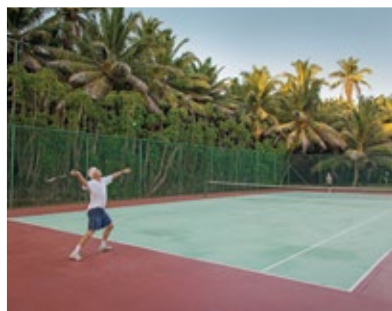
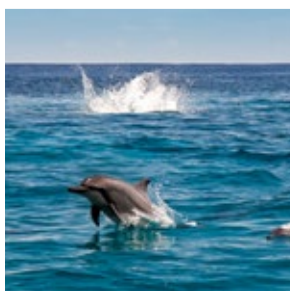
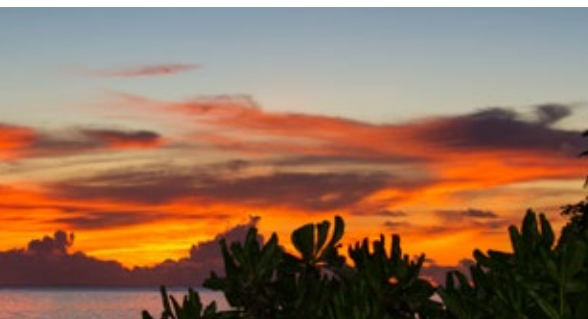
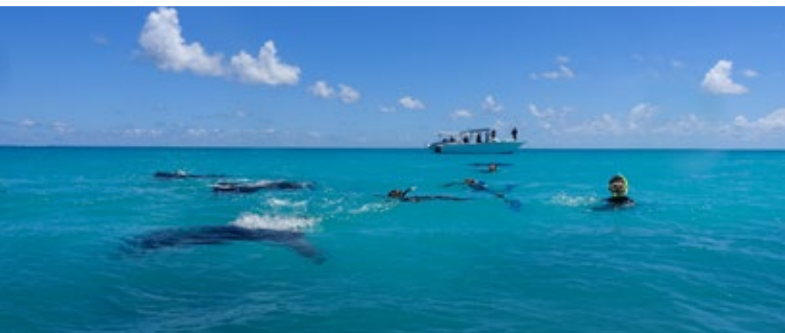
SUNSET LAGOON CRUISE

Set sail into the Alphonse Lagoon on one of our luxury boats to salute the setting sun with a cocktail or beer from the bar. Share stories from your week and bask in the stillness of the departing day.

ST FRANCOIS NATURE HIKE

A nature walk on the uninhabited island of St Francois will guide guests through the mangroves where birds roost high in the tree tops and others wade across the vast white sand flats. Wildlife on this untouched island is amazing. Manta rays, pelagic fish and cetaceans are often viewed on the 40 minute crossing from Alphonse.

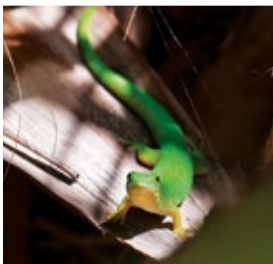






CONSERVATION

Research, Rehabilitation & Protection



Conservation is something held very close to the hearts of everyone on Alphonse Island. Alphonse is committed to protecting the unique fauna and flora of the area with ongoing research, rehabilitation and monitoring programs, focusing especially on nesting sea turtles, giant tortoises, sensitive marine habitats and forest rehabilitation. This dedication to conservation has at all times been at the centre of the mission to create an exclusive island that is intimately connected to the natural environment.

Established in 2007, the Island Conservation Society Centre has ensured the key aspects of the eco-system are well maintained and cared for. The Island Conservation Society [ICS] team offers activities upon the island such as Turtle Patrol, Beach Clean ups, Giant Tortoise viewing and feeding and bird-watching which guests are encouraged to join. Without their sound knowledge, the eco-system on the atoll would not be how it is today.

Alphonse Island provides support through its membership on the board of the Alphonse Conservation Foundation and hotel guests contribute essential funding to the activities of ICS through the payment of a conservation donation. ICS provides a weekly presentation which provides progress updates and discussion of environmental topics. Books, souvenirs and T-shirts can be purchased from the ICS office or the Boutique, with the proceeds providing further financial support to the conservation efforts.





THE FINER DETAILS

Things to Take Note of...

INCLUSIONS & EXCLUSIONS

RATES INCLUDE

- Six days fully guided fishing on a shared skiff basis
- Three meals daily
- Charter flights to and from Alphonse
- Room amenities, non motorised and land based activities
- Soft drinks during activities
- Complimentary scheduled communal excursions
- Snorkelling equipment [Loss of gear will be charged per item]
- Watersport equipment [Stand up paddle boards, kayaks, peddle boats]
- Water, tea and coffee
- Fly fishing rod and reel loan
- Public Wi-Fi
- VAT

RATES EXCLUDE

- Mahé accommodation and transfers
- Conservation donations
- Beverages
- Motorised activities
- Additional excursions
- Laundry and items of a personal nature
- International flights
- Gratuities
- Telephone charges
- Spa treatments
- Boutique and shop purchases
- Babysitting/Child-minding

GENERAL INFORMATION

ST FRANCOIS FISHING SEASON

Early September to the end of May.

WEATHER

Typically hot and somewhat humid with midday temperatures hovering at $\pm 35^{\circ}$ Celsius [$\pm 90^{\circ}$ Fahrenheit].

Evenings are also invariably warm with the exception of the first and last few weeks of the season, when there may be a strong, cooling breeze.

DAYLIGHT HOURS

Due to its proximity to the equator, there is no real twilight in the Seychelles. The sun rises quickly at around 06h15 and sets with equal swiftness at about 18h30.

This varies by only minutes throughout the year, giving nearly a full 12 hours of daylight for 365 days a year.

TIME ZONE

GMT +4 hours. [+3 hours during Northern Hemisphere Summer].

WATER

There is a desalination plant on Alphonse, and water from the faucet is safe to drink. Mineral water is only stocked when specifically requested prior to arrival.

ELECTRICITY

The Island has 24-hour electrical current [240 volt, 50 cycles AC] with British plug points. A European electrical current adapter [3-point, square-pin] is necessary.

CELLULAR / MOBILE PHONES / INTERNET

- There is no mobile signal/connectivity on the island.
- Each Bungalow and Suite has a phone service, operated via satellite.
- There is free wi-fi in the bar and lounge area.

CHILDREN

- Children of all ages are welcome at Alphonse Island.
- Children one to 23 months stay complimentary.
- Fun and educational activities for children in a stimulating environment.
- Special menus with nourishing and appropriate options for developing palates.
- Child minders are available [at an additional charge].

FLIGHTS – LUGGAGE

Check in luggage is strictly limited to 15kg [33 pounds] per person, and 5kg [12 pounds] carry-on luggage. This is a strict policy allowing delivery of fresh food produce to the island. If it is not possible to load extra luggage, it will have to be repacked and left in Mahé until your return.

PLEASE ADHERE TO THE LIMITS. It is suggested that lighter soft-shell luggage is used. Pack a separate bag with excess equipment to avoid having to repack at the airport. Excess luggage can be left with an Alphonse representative at the hangar.

DUTY FREE ALLOWANCE

200 cigarettes or 50 cigars, one litre of spirits and two litres of wine.

PAYABLE SERVICES AT MAHÉ INTERNATIONAL AIRPORT

- Mahé accommodation and transfers
- Air Seychelles VIP Services – Fast-tracking through airport and special convenience services.
- Salon de Vallée de Mai Departure Lounge – for the comfort convenience of clients awaiting air connections upon departure. This service is complimentary to business class travellers.
- Meals in Mahé will be for your own expense.
- Accommodation and Tours and transfers in Mahé is an additional cost which can be arranged independently or by Alphonse Island.

CONSERVATION DONATIONS

There is a mandatory conservation donation of USD175 per week [USD25 per day] for anglers on a St Francois fishing package and USD70 per week [USD10 per day] for leisure guests. This will be included on your confirmation invoice and is settled prior to arrival. Children free of charge.

All packages exclude this conservation donation which is donated to the Island Conservation Society for the preservation of nature in the Seychelles.

GRATUITIES

Tipping is never mandatory. Should you wish to show your appreciation to the staff – the below amounts are a guideline [based on average tips given].

General Hotel Staff: \pm USD250 per person per week or USD35 per day. This can be left at reception upon departure for equal distribution.

Diving Staff: \pm USD20 per dive for the diving team, which is given to the respective manager at the end of the week and will be divided up by the dive team and skippers.

Fishing Guides: \pm USD85 per day or USD500 per week.

Activity Centre Team: \pm USD10 per day for the activity team if you have joined any activities, which can be left at reception upon departure for equal distribution.

INDEMNITIES

All guests are required to sign an indemnity form once on location. Divers booked on courses must complete the Medical Statement prior to diving, this is provided prior to arrival in case you need to arrange medical clearance for diving from your physician.





PASSPORTS & VISAS

No visa required for a holiday.

TRAVEL INSURANCE

It is vital that all guests booking a stay on Alphonse Island have a comprehensive travel insurance policy, Alphonse Island is not liable for any miss-connecting flights for any reason, including weather.

Guests planning to dive will be asked to provide their travel insurance details as proof of cover for diving activities. This is often included in general travel insurance policies but should you wish to dive deep, please check any depth restrictions.

ACCIDENT MEDEVAC INSURANCE

All guests are required to obtain "From Scene of Accident Medevac Insurance". Details must be submitted prior to arrival on the Island.

SAFETY

There are no cyclones, busy roads or dangerous animals, and the ocean around the island is tranquil and calm.

MALARIA

The Island is malaria free.

VACCINATIONS & INOCULATIONS

None required for entry. However, you may want to check with your local immunization and inoculation clinic for their recommendations on health precautions for travel to the Seychelles.

MEDICAL CARE

A qualified medical person [nurse] is on call to deal with any emergencies.

SUN PROTECTION

Due to the close proximity to the equator, the sun in the is exceptionally strong, with the white sand increasing its effect. A strong sunbathing lotion or sun block is recommended, as is wearing a hat, protecting your head from direct sunlight. For water sports, [such as snorkelling], a T-shirt [rash vest] is recommended – available for purchase from the Alphonse shop.

DRESS CODE

There is no dress code on Alphonse Island. The island is informal – casual dress – including dinners.

PAYMENT & BOOKING INFORMATION

CREDIT CARD EXCHANGE

The following credit cards are accepted:

- MasterCard • Visa
- American Express is not accepted.

CURRENCIES ACCEPTED

- Seychelles Rupee • USD • Euro • GBP

CANCELLATIONS

- A 10% fee shall be levied if the reservation is moved to an alternative date within the same season.
- A fee of 10% shall be levied if cancellation is more than 180 days prior to arrival.
- A fee of 50% shall be levied if cancellation is between 180 and 90 days prior to arrival.
- A fee of 100% shall be levied if cancellation is 90 days or less prior to arrival.
- All cancellations and provisional bookings must be confirmed in writing.

PAYMENTS

- A deposit of 50% of the total package charge is required to confirm your booking and the balance is payable in full 3 months prior to arrival.
- All extras will be settled at the hotel on departure.

TARIFFS ARE QUOTED

- Inclusive of VAT in US Dollars
- Subject to availability

TARIFF CHANGES

All tariffs are subject to change, without prior notice, however rates quoted for confirmed bookings will be honoured.

VAT [a Government tax]

A Government Tax [VAT] of 15% is applicable on all items payable.

BANKING DETAILS

Beneficiary	Alphonse Island Lodge LTD
Bank Name	Mauritius Commercial Bank [SEY] LTD
Bank Address	Victoria Branch P O Box 122, Mahé, Seychelles
Account No	00000 254557
SWIFT CODE	MCBLSCSC
IBAN	SC53 MCBL 0607 0000 0000 0025 4557 USD



ALPHONSE
FISHING COMPANY
SEYCHELLES

CONTACT DETAILS

ISLAND

Telephone +248 422 97 00
+248 422 90 30

E-mail info@alphonsefishingco.com

RESERVATIONS

E-mail reservations@alphonsefishingco.com

MARKETING

E-mail marketing@alphonse-island.com

Postal Alphonse Island Lodge
Address P O Box 378, Victoria, Mahé
Republic of Seychelles

Website www.alphonsefishingco.com

Facebook [alphonse.island](https://www.facebook.com/alphonse.island)

Blog www.alphonse-island.com/en/blog